





Phillipsbrook Road

Old Albany Post Road

Park

Gate  
ENTER







**John Allen**, *Stone*, 4 x 6 x 24 inches, Granite



**Inez Andrucyk**, *Reflections*, 12 Pieces, 80 x 6 x 18 inches, Iron, fabric, glass with shepard's pole



**Roger Baumann**, *Death of a Salesman*, Cast iron





**Marc Bernier**, *Caliburn*, 73 X 24 X 23 inches, railroad ties, tar paper and salt blocks



**Cristine Biaggi**, *The Web*, 40 feet in diameter, collage on cloth with red ropes



**John Bonsignore**, *soirée d'été = Summer evening*, 9 x 3 x 3 feet, Stainless steel





**Susan Buroker**, *Untitled*, steel



**Jo-Ann Brody**, *Sitting figure on swing*, 46 x 22 x 21 inches, Colored cement on swing



**Jodi Carlson**, *Orbs*, 10 x 8 x 8 feet, repurposed steel (trampolines,) aluminum curtain from Guggenheim exhibit





**Ada Cruz, *Heart***, appx: 23 x 18 x 4 inches, Clay and wire



**Morgan Donohue, *Bound***, 9 1/2 x 2 x 2 feet, Cedar and steel



**Jill Enfield, *Glasshouse of Immigrants***, 8 x 8 x 8 feet,  
Wet plate collodion transfers on glass windows





**Robert Freidman**, *Homage to Jim Arneson*, 16 x15 x 16 inches, Clay w/ oxides and glaze



**Barbara Galazzo**, *The Buzzed Bird*, 7 x 4.5 x 3 feet, Steel and Aluminum



**Kayla Gibbons**, *Casting of Old Albany Post Road*, Cast concrete, wood, automotive lacquer





**Eric Jacobson**, *The Emperor's New Fence*, 6 x 30 feet, Painted steel tubing,



**Bernard Klevicakas**, *Carch*, Approx 5 x 5 x 11 feet, Surface of car hoods and grill lid,



**Veronica Kovachi**, *Untitled*, plastic tubing,





**David Link**, *Saturn & Farm*, 36 x 30 x 30 inches, Repurposed Wood

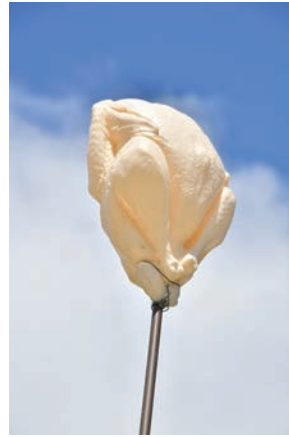


**Jim Lloyd**, *Make a wish*, 9 x 7 feet, Welded steel tube



**Ellie Murphy**, *Fiber Nacho (Fibo Nacci)*, 2019, 7 x 30 feet, Polypropylene cord, vinyl tubing and hardware

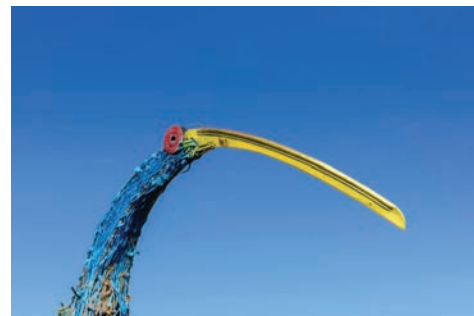
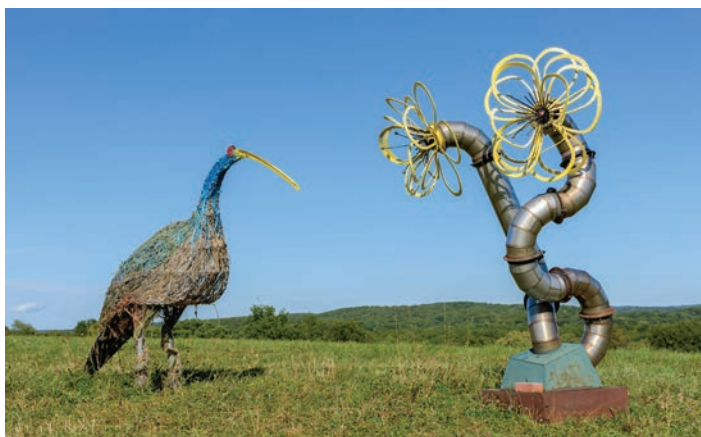




**Michael Natiello**, *Which came first?*, approx 12 x 8 feet, steel and plastic turkey

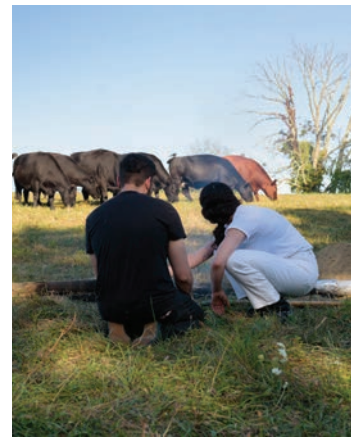


**Hildreth Potts**, *Steel-wool Poodles (Gula's dogs)*, 48 x 48 x 12 inches

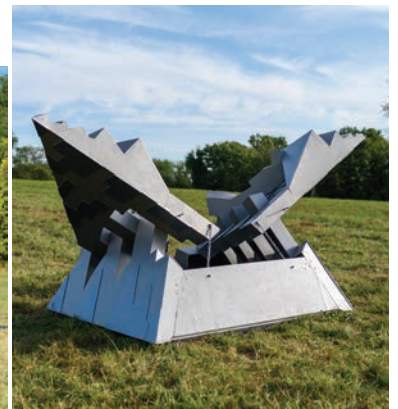


**Herman Roggeman**, *Big Bird*, Stainless armature plus baling wire, old metal farm sign





**Lara Saget & Jerry Adams, *Blackthorn Ashes*, Dimensions variable, Glass, Blackthorn Ashes, cinder-blocks, *Monument Tree Markers*, Dimensions variable, Wood**



**James Scannell, *The Meaning Machine*, 7 x 7 x 6 feet, (Opens 12 x 10 feet), Wood, Steel**



**Peter Schlemowitz, *Thirty/Sixty*, 6.5 x 13.1 x 5 feet, Plywood/Steel**





**Fred Schlitzer**, *Hudson Valley Hiking Trails*, 6 x 14 feet, 400 pounds, Wood,

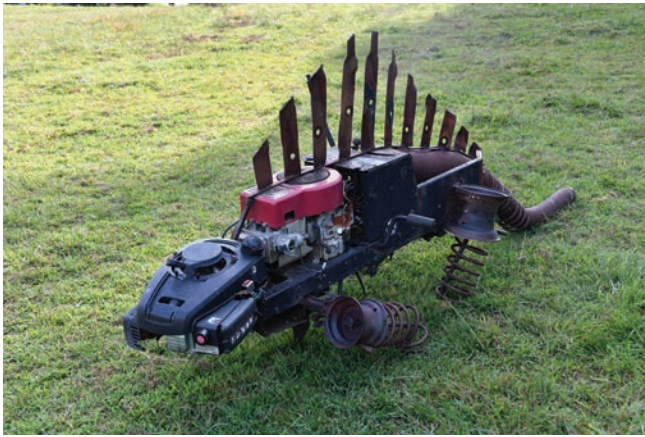


**Linda Schmidt**, *Untitled*, Dimensions variable, vinyl, ripstop, fabric, lucite, acrylic tubes



**Tom Shaw**, *Which way the wind blows*, Found objects





**Vyslas Sirusas, *Briggs***, 12 feet long, found objects- riding mower, power washer, garage door spring- welded



**Betty Stafford, *Leaf Mobile***, 26 x 32 x ½ inches



**Kurt Steger, *Witness***, 67 x 33 x 29 inches, 5 pounds, wood, pigment, twine  
***Dancer***, 74 x 29 x 15 inches 2.5 pounds, wood, pigment, twine





**Storm King School, *Animal Farm Redux*, Wood, steel, 8 x 6 x 4feet**



**Herrat Sommerhoff, *Maypole*, 72 x 24 x 24 inches, Wood, Styrofoam, covered with stucco, metal stand**



**Chuck von Schmidt, *The Big C*, wood, 60"x60"x18"**





**Jim Thomson, *Spirit of The Hudson*, 1/2 x 14 x 1/2 feet, Wood -Cedar**



**Alex Uribe, *Untitled*, Mixed media**



**Andre Voumard, steel**







**Eva Whorley**, *grapes of wrath*, 6 x 6 feet, metal rings from whiskey barrels and copper wire



**Max Yawney**, *Untitled*





## Performance

### **Marcy B. Freedman** *With your eyes closed, take a deep breath and talk to me.*

Interactive performance enabling me to interact directly with members of the public, one-on-one, without the use of technology.



### **Carla Rae Johnson**

World's greatest golfer



### **Francesca Ricapito**

## Music

Bert Rechtschaffer Trio  
Thom Joyce

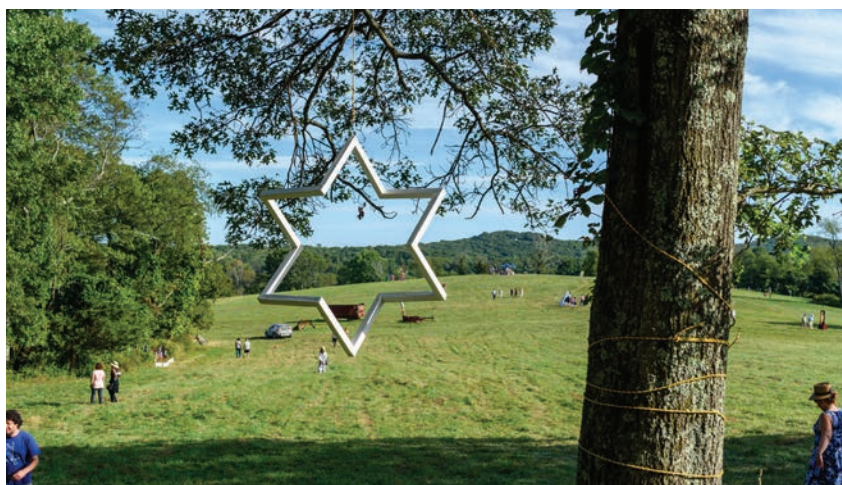


## AJUMA

A one person monolog. Produced by Studio Theater In Exile with Katori Walker, Directed by Mara Mills

### **Doansberg Chamber Ensemble**

Christine Smith, flautist and Joy Plaisted, harpist,  
Doansburg Chamber Ensemble





## **Committee for the Farm Project 2019**

Jo-Ann Brody

Barbara Galazzo

Dell Jones

Carla Rae Johnson

Thom Joyce

Jim Lloyd

Fred and Mary Schlitzer

Peter Schlemowitz

Emeritus-Jodi Carlson

Emeritus-Sarah Haviland

Emeritus-Herman Roggeman

Exhibition Calendar

Opening Reception: August 31, 2-6pm

with music and performance art

Mid Run Reception

September 21, 2-6pm

Drama: AJUMA

Music:

with Christine Smith and Joy Plaisted of the Doansburg Chamber Ensemble

End of Exhibition: October 26

With special thanks to

**Sandy and Shelley** (hosts and support)

**Joyce Picone**, Executive Director, Putnam Arts Council

This exhibition is made possible, in part, by the **New York State Council on the Arts** with the support of governor Andrew Cuomo and the New York State Legislature. In Putnam County this grant program is managed and monitored by the Putnam Arts Council, Mahopac, NY.

Thanks also to the **Anastasi Foundation**.

Thanks to the following for their generous donations of time, talent, and wisdom—

Jo-Ann Brody

Morgan Donohoe (parking)

Max Yawney and Elbert Mills (photography)

The reception volunteers

The artists who donated to the auction

The many businesses who support us with their ads.







